



INSTALLATION INSTRUCTIONS

SMALL PANEL FLUSH MOUNT, SMALL PANEL TILT MOUNT,
SMALL PANEL FULLY ARTICULATING MOUNT
PRODUCT NO. WSF, WST, WSFM

BOX CONTENTS: INSTALLATION INSTRUCTIONS; MOVIEW MEDIUM FLUSH, TILT, OR FULLY ARTICULATING MOUNT; ALL NECESSARY HARDWARE; WALL TRACK

TOOLS NEEDED FOR INSTALLATION: STUD FINDER; SCREWDRIVER; DRILL WITH 1/8" BIT; PLUMB LEVEL; ALLEN WRENCH

SMALL PANEL FLUSH MOUNT, SMALL PANEL TILT MOUNT, SMALL FULLY ARTICULATING MOUNT

SUPPORTS TV SCREENS UP TO 26" AND 30 lbs.

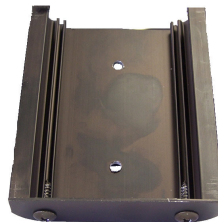
! WARNING !

Read ALL instructions before installation. Any questions or concerns about the product please contact MOVIEW at: (616) 837-0246 or e-mail at info@moview.com. Please visit www.moview.com for further flat panel mounting solutions and the whole Moview product line.

SeaLand Incorporated, manufacturer of Moview products, cannot be responsible for any damage or injury resulting from improper installation, adjustment or use of the Moview product. It is the responsibility of the purchaser to read and fully understand all of the directions contained herein.

STEP 1: ATTACHING WALL TRACK TO WALL

CAUTION: When mounting wall track, a minimum 1" engagement with a solid wood or steel sub-strate is required. Necessary 1" sub-strate is NOT including drywall or wall track thickness. (If mounting to concrete, appropriate concrete anchors must be purchased and installed according to their manufacturer's instructions and specifications.)



Determine where you want your flat panel mounted on the wall. Using a stud finder, locate and mark the edges of the wood stud. Using the plumb level (to ensure straightness of track), align the wall track and mark center hole locations, ensuring the marks are centered on the solid sub-strate.

Drill holes, with 1/8" drill bit, at marked location. With plate on wall track facing down, align wall track holes with newly drilled holes and use screwdriver to attach with A screws (Refer to Included Hardware table).

BOLTS

A (2) # 12 x 2
1/2" Philips Pan
Head



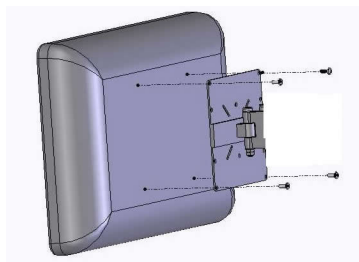
OTHER

A (2) # 8 X 3/8"
Philip Pan Head
Security, Anti-
theft Fasteners



STEP 2: ATTACHING T.V. TO WALL MOUNT

Determine diameter and length of fastener required in order to attach the T.V. to the face plate. Fastener diameter and length varies from manufacturer to manufacturer. We have supplied some of the most common fasteners. (Refer to Bag 1 Fasteners A - H of the Hardware Contents). Please refer to your T.V. manual to reference correct fastener specification for wall mounting. (NOTE: For T.V. s that do not have a flat surface back, curved or recessed, we provide spacers to accommodate).



Place the plate in the center of the T.V.'s backside, aligning the T.V. holes with the plate holes. Use a screwdriver to screw in the selected fasteners and tighten.

STEP 3: ATTACHING WALL MOUNT TO WALL TRACK

Insert anti-theft
fasteners

